

## Admitted Appetite (General Liability, Automobile, Commercial Excess)

We successfully focus on small and medium-sized ventures, new and tenured, that have difficulty obtaining severity driven General Liability. Here is a partial list by ISO Standard Industrial Classifications. **Please note this is not a comprehensive risk appetite list. We welcome the opportunity to discuss other classifications with you.**

### Agent Portal Products

These products are now available on the MCG agent portal:

- Contractor's Equipment
- Flow Tester
- Homebuilders
- Oilfield Welder
- Pumpers and Gaugers
- Tank Owner's Pollution

### Agricultural/Forestry



#### SIC 07 Agricultural Services

- Custom planting/harvesting
- Forestry service
- Lawn care and landscaping services
- Logging (*general liability and excess GL only*)
- Mobile equipment repair
- Non-aerial spraying

### Energy/Mining



#### SIC 13 Oil and Gas/Energy Contractors

- Lease road construction and maintenance
- Contractors equipment suppliers
- Flow tester
- Lease site construction and beautification
- Oil lease operators/non-operators
- Pumper/gauger
- Various roustabout services
- Welding

#### SIC 14 Quarrying

- Gravel digging
- Rock quarry
- Sand digging

### Wholesale Trades



#### SIC 50 Durable Goods

- Solar energy equipment dealers or distributors
- Building materials
- Metal scrap dealer
- Steel and iron

#### SIC 51 Non-Durable Goods

- Flower, nursery stock, and florist
- Livestock sales
- Seed merchant

Mid-Continent's Agent Portal. It's everything you need, right at your fingertips!

#### Main Address

1437 S. Boulder Ave., Ste. 200  
Tulsa, OK 74119

#### Postal Address

P.O. Box 1409  
Tulsa, OK 74101-1409

Toll-Free: 800-722-4994

Phone: 918-587-7221

Fax: 918-588-1295

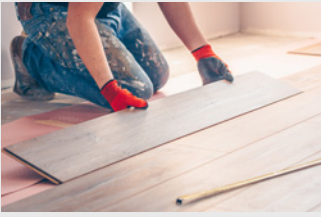
[www.mcg-ins.com](http://www.mcg-ins.com)



**MID-CONTINENT GROUP**

MEMBER OF GREAT AMERICAN INSURANCE GROUP

## Construction



### SIC 15 Building Construction

- Carpentry
- General handyman
- Residential general contractors

### SIC 16 Heavy Construction

- Commercial general contractors
- Real estate development property
- Solar energy contractors
- Utility line construction
- Wind turbine contractors

### SIC 17 Specialty Trade Contractors

- Alternative energy
- Concrete
- Drywall
- Flooring
- Grading of land
- Metal erection
- Millright / machinery, equipment installation, repair
- Painting
- Septic tank
- Site clean-up
- Swimming pool contractors
- Water well drilling
- Wind farm road construction and maintenance

**\* Ineligible states for construction operations:**

AK, AZ, CA, CO, DC, DE, FL, HI, IL, LA, MO, MS, MT, NJ, NV, NY, OR, WA, and WI.

## Manufacturing



### SIC 24 Lumber/Wood Products

- Door sash millwork
- Fencing
- Pallet
- Sawmills
- Truss

### SIC 25 Furniture and Fixtures

- Cabinets
- Custom woodwork and millwork

### SIC 30 Rubber and Plastic Products

- Gasket
- Various household rubber and plastic goods

### SIC 33 Primary Metals

- Cable and wire goods
- Various iron and steel products

### SIC 34 Fabricated Metals Product

- Non-load bearing structural steelworks
- Small hand tools
- Various containers, boxes, and tanks

### SIC 35 Industrial and Commercial Machinery

- Construction and agricultural machinery parts
- Machine shops
- Pumps, valves, and compressors

### SIC 37 Transportation Equipment

- Utility trailer
- Aircraft parts (excluding products/completed operations)

### SIC 39 Miscellaneous Manufacturing Industries

- Burial/vault
- Sign manufacturing

## Services



### SIC 42 Trucking and warehousing

- Pilot Cars Services

### SIC 72 Personal Services

- Carpet rug cleaning
- Portable toilet rentals

### SIC 73 Business Services

- Medical equipment sales, service, and repair
- Sign installation, service, and repair

### SIC 76 Miscellaneous Repairs

- Boiler
- Electronic equipment installation, service, and repair
- Household appliance service and repair
- Office machine installation, inspection, and repair

## ALSO AVAILABLE

### Non-Admitted Appetite

Mid-Continent also offers General Liability opportunities to the Non-Admitted market.

Please ask your Mid-Continent representative for more information.

**Mid-Continent Group - Providing insurance solutions since 1947**



**MID-CONTINENT GROUP**

MEMBER OF GREAT AMERICAN INSURANCE GROUP